

**Communities Scrutiny  
Sub-Committee  
4<sup>th</sup> June 2007  
Promoting Strong, Healthy & Safe  
Communities  
Year End Performance 2006/07**



---

**Report of the Head of Corporate Policy**

---

**Purpose of the Report**

- 1 The purpose of this report is to provide an update of 2006/07 year end performance for the authority's corporate priorities relevant to our Corporate Aim of Promoting Strong, Healthy and Safe Communities.
- 2 The 2006/07 end of year performance for indicators aligned to Promoting Strong, Healthy & Safe Communities is available in Appendix A.
- 3 To gain maximum impact of performance management intelligence from Performance Plus, the system requires tolerances and milestones to be set for targets. A zero tolerance has been set for 2006/07 targets.

**Key to Tables**



increasing, improved performance



decreasing, improved performance



decreasing, deteriorating performance



increasing, deteriorating performance



no change



performance worse than target (outside tolerance)



performance within tolerance levels



performance better than target (outside tolerance)

**Key to Quartile Positions**



bottom quartile



third quartile



second quartile



top quartile

**Key to Graphs**

— Actual



worse than target performance



better than target performance



Projection - 3 data points



Projection - 9 data points

## Priorities for Improvement

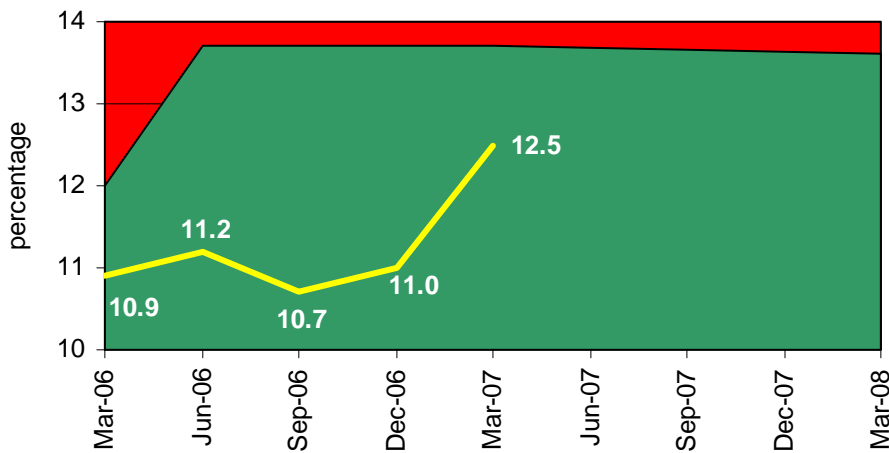
- 4 There are 3 priority areas for improvement aligned to our Corporate Aim, Promoting Strong, Healthy and Safe Communities.

### Protecting and Supporting Vulnerable Children

Within this theme there are 3 outcomes that have been identified as areas we want to improve.

**Fewer children at risk** – to know if we are succeeding at this we are measuring:

- **PAF A3 – re-registrations on the Child Protection Register**



Actual	
12.50	

Target	
13.70	

The percentage of re-registrations on the child protection register increased during 2006/07, although it should be noted that performance was better than target. This indicator is carefully monitored, as it is a volatile indicator that is prone to fluctuation as re-registrations often include large sibling groups.

Related to this outcome, the quality and performance of children's social care was judged by inspectors to have improved year on year, and was judged as excellent in the 2006 Annual Performance Assessment

**Better access for young people to mental health services** – to know if we are succeeding at this we are measuring:

- **LAA C&YP 2b – acute mental health referrals within 5 days**

During 2006/07, the percentage of young people assessed by ASSET as manifesting acute mental health difficulties who were referred by County Durham Youth Engagement Service (CDYES) to Child & Adolescent Mental Health Services (CAMHS) for formal assessment within 5 working days, increased from 88.9% to 100%.

- **LAA C&YP 2c – non-acute mental health referrals within 15 days**

During 2006/07, the percentage of young people assessed by ASSET as manifesting non-acute mental health difficulties who were referred by County Durham Youth Engagement Service (CDYES) to Child & Adolescent Mental Health Services (CAMHS) for formal assessment within 15 working days, increased from 83.3% to 94.1%. However, this falls short of our 100% target and is slightly below the 95% national target.

**Fewer young people offending**– to know if we are succeeding at this we are measuring:

• **LAA SSC 1f – first time entrants to the youth justice system**

Our target of 1037 first time entrants to the Youth Justice System was not met in 2006/07. Actual first time entrants during the year were 1161. This increase in the number of first time entrants can be attributed to the following factors:

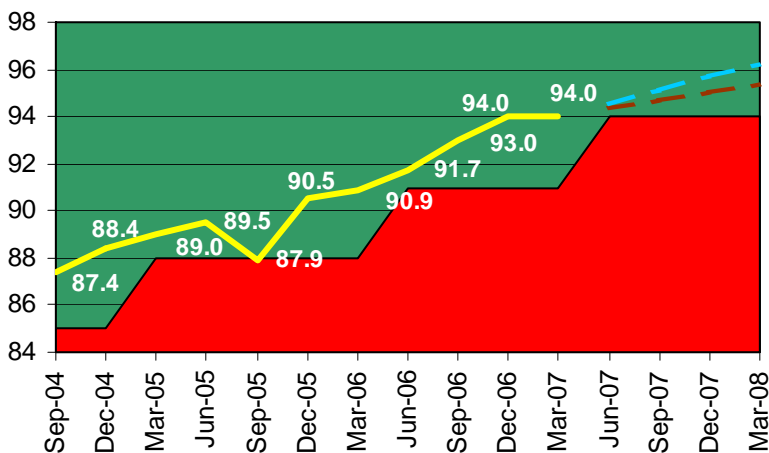
- o The national trend for first time entrants to the youth justice system is increasing
- o New police targets for offences brought to justice have impacted on performance
- o There has been an increase in first time entrants in Derwentside CDRP area arising from the loss of NRF funding for targeted Youth Crime prevention and the subsequent loss of its Youth Inclusion Prevention programme.

**Protecting and Supporting Vulnerable Adults**

Within this theme there are 2 outcomes that have been identified as areas we want to improve.

**Improved opportunities, choice and independence for vulnerable adults and older people**– to know if we are succeeding at this we are measuring:

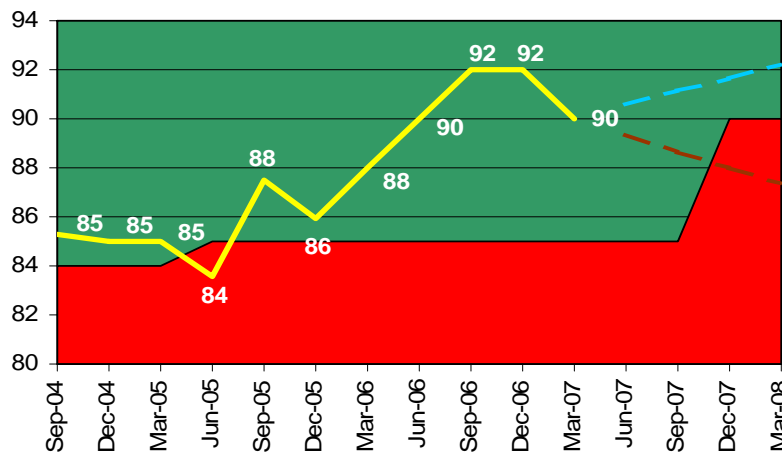
• **BV056 - % equipment delivered / adapted within 7 working days**



Quartile Position		
2003/04	2004/05	2005/06
<b>Actual</b>		
94.00	█	
<b>Target</b>		
91.00	●	

2006/07 performance has exceeded both last year's performance and our 2006/07 target by 3 percentage points

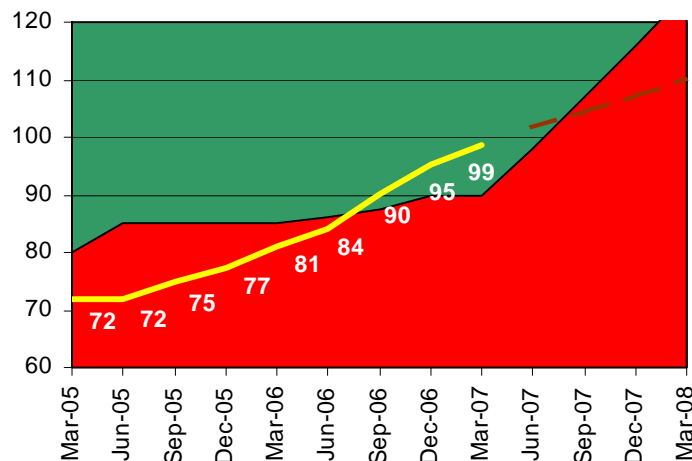
- BV 196 – acceptable wait for care packages**



Quartile Position	
2003/04	2004/05
2005/06	
<b>Actual</b>	
90.00	✘
<b>Target</b>	
85.00	●

2006/07 performance has exceeded last year's performance by 2 percentage points and our 2006/07 target by 5 percentage points

- BV 201 – adults receiving direct payments of benefits (LAA stretch target)**



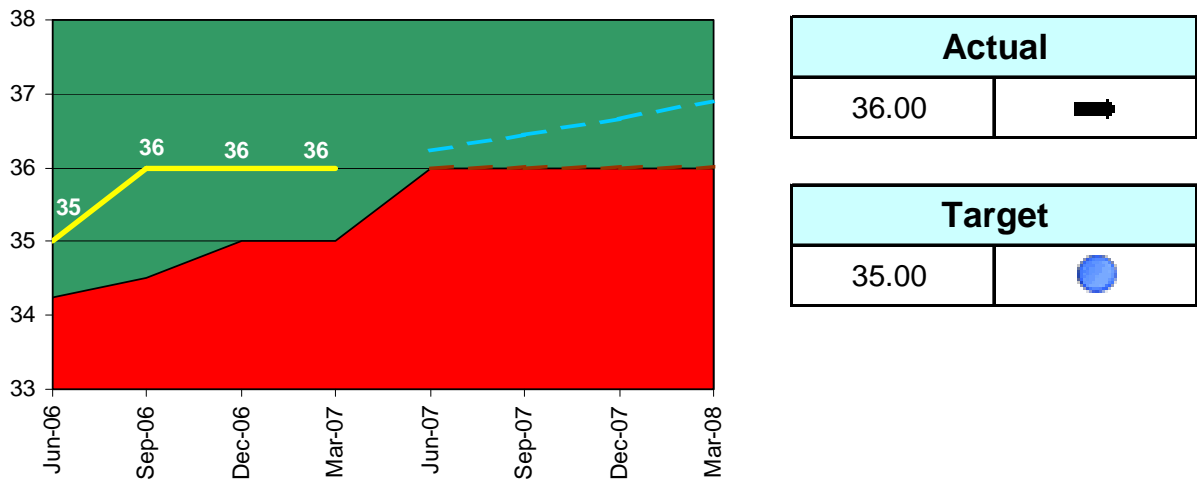
Quartile Position	
2003/04	2004/05
2005/06	
<b>Actual</b>	
98.70	✔
<b>Target</b>	
90.00	●

Performance has exceeded target by 8.7 percentage points. There is a dedicated team of support workers and marketing specialists for clients/carers and staff. A robust policy and procedure is in place to ensure all users are encouraged to take up direct payments. Inter-agency awareness raising and peer group support for users is in progress. Continuous retraining in person centred care / in control / care management ensures that all frontline staff are aware of the increased flexibility and independence users receive from a direct payment and tailor-made innovative services are increasing, e.g. using direct payment to support return to education rather than day care.

- LAA HC&OP 3b – older people in receipt of council tax benefit (CTB) (LAA stretch target)**

The expected growth in older CTB claimant take up has not materialised. The LAA Stretch Target for 2006/07 was for 33,926 older CTB claimants and latest data indicates performance of 31,599. It has been suggested that the CTB figures could have been impacted by take up completed for Pension Credits for previous years.

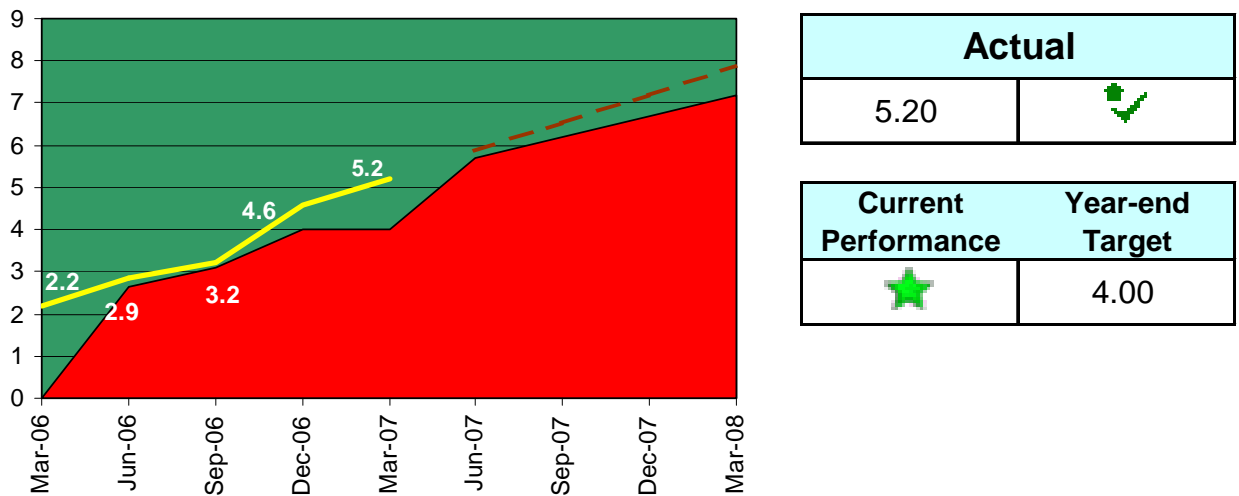
• **LAA HC&OP 5a - % receiving intensive home care**



Performance for 2006/07 has exceeded the target by 1 percentage point.

**Improved employment opportunities for people with learning difficulties** – to know if we are succeeding at this we are measuring:

• **LAA HC&OP 4c - % people with learning disabilities (known to the Council) in work**



The percentage of people with learning disabilities, known to the council, in work has continued to improve and the 2006/07 target has been exceeded. Many initiatives have been supported by Workable Solutions including the creation of new posts for people with learning disabilities within Durham County Council.

Related to this outcome for people with learning disabilities is the new County Durham Learning Disability Parliament. In 2003 the Learning Disabilities Partnership Board initiated a new formal system of representation for people with learning disabilities via the Learning Disability Partnership. It was hoped that such a system would give people with learning disabilities a clear route into decision making, give a higher profile to service user involvement and encourage more service users to become involved.

The 5 localities in Durham have each established a service user locality group with service specific user representation. 5 Members of the Learning Disability Parliament have been

elected within each area as have user representatives for the Partnership Board. The official opening of the parliament took place on the 24th of February 2006. Hilary Armstrong MP opened the proceedings. The 25 Members of the Learning Disability Partnership and other representatives now meet every month, bringing issues from each locality and taking back key messages to the locality groups from the parliament.

## Improving Health

Within this theme there are 3 outcomes that have been identified as areas we want to improve.

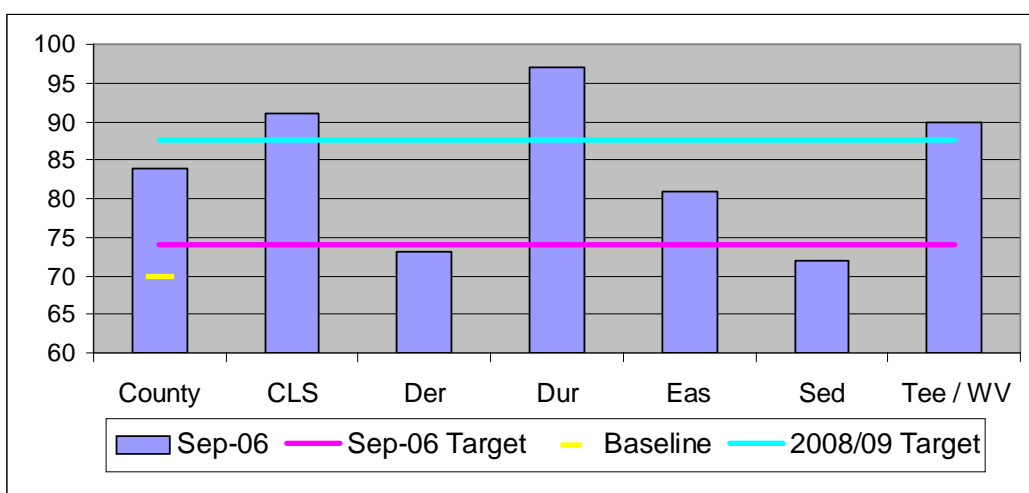
### More children eating and drinking healthily and regularly involved in physical activity inside and outside school – to know if we are succeeding at this we are measuring:

- **LAA C&YP 01b – % primary schools achieving new National Healthy Schools Status (NHSS)**

78 schools have achieved National Healthy Schools Status so far with 165 working towards validation. There has been a continued increase throughout the year, although performance of 27.5% is well below the target of 80%.

- **LAA C&YP 01c – Number of children taking up sport**

Overall County Durham exceeds the target comfortably with exceptional performance in Durham City where 97% of children take up sport. This masks performance in Derwentside and Sedgefield which is marginally below target. The partnerships have employed a range of community sports coaches and support staff to assist in running activities within their respective partnerships. Activity is taking place on lunchtimes, as well as in curriculum and out of school hours time. As well as traditional clubs, they are developing some diverse activities which engage some of the more 'hard to reach' pupils. Further work has taken place on developing playgrounds, making them more conducive to activity, through innovative markings and play areas. Funding has also been used to aid transport to and from festivals and for resources.



**Reduction in the number of people smoking** – to know if we are succeeding at this we are measuring:

- **LAA HC&OP 1d – adult smoking rate**

The percentage of people aged 15-75 years smoking (as recorded on GP registers) has increased during 2006/07, by 3.1 percentage points (from 29.4% to 32.5%). A breakdown of the adult smoking rate by locality is shown below;

Locality	% Adult Smoking Rate	Target
Derwentside	39.79%	
Durham and Chester-le-Street	23.53%	
Durham Dales	29.45%	
Easington	40.70%	
Sedgefield	34.90%	
County Durham	32.55%	29.67%

- **LAA HC&OP 1e – no. of 4 week quitters using NHS service (LAA stretch target)**

Due to the nature of this indicator, performance is unavailable until June 2007.

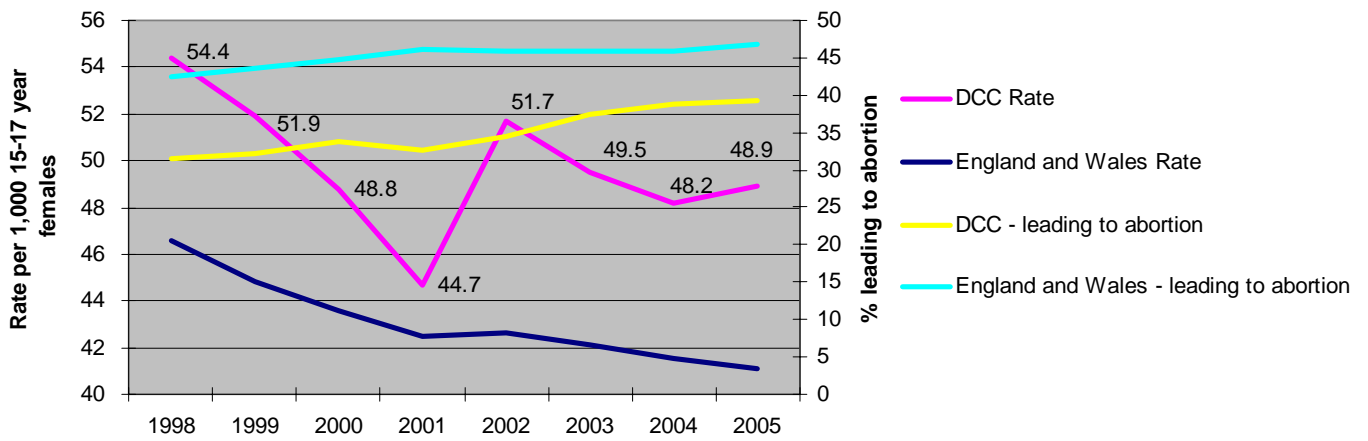
**Reduction in teenage pregnancies** – to know if we are succeeding at this we are measuring:

- **QoL 35 – teenage pregnancy**

Figures for 2005 released during 2006/07 show that the number of teenage pregnancies per 1,000 population 15-17 year olds has risen again slightly, so that the overall reduction since 1998 stands at 10.1%. The rise is disappointing. It can be seen that to meet the target of a 55% reduction by 2010, there will need to be a considerable acceleration in the reduction of the rate.

Durham County	1998	1999	2000	2001	2002	2003	2004	2005
Number	499	469	435	399	469	458	445	457
Rate	54.40	51.90	48.80	44.70	51.70	49.50	48.20	48.90
Leading to abortion	31.50	32.20	33.80	32.60	34.50	37.40	38.70	39.20
Change from 1998	0.0%	-4.6%	-10.3%	-17.8%	-5.0%	-9.0%	-11.4%	-10.1%

England	1998	1999	2000	2001	2002	2003	2004	2005
Number	41,089	39,247	38,699	38,461	39,350	39,545	39,545	39,683
Rate	46.60	44.80	43.60	42.50	42.60	42.10	41.50	41.10
Leading to abortion	42.40	43.50	44.80	46.10	46.00	46.00	46.00	46.90
Change from 1998	0.0%	-3.9%	-6.4%	-8.8%	-8.6%	-9.7%	-10.9%	-11.8%



**Recommendations**

That Corporate Scrutiny Sub-Committee Members:

- (i) note the contents of this report
- (ii) agree to receiving subsequent quarterly performance progress reports

**Contact: Debra Kitching**

**Tel: 0191 383 4186**